

## Have your say

We are now consulting local people on a new pattern of wards for East Riding of Yorkshire Council. We have an open mind about our final recommendations, and we will consider every piece of evidence we receive from local groups and people, regardless of whom it is from or whether it relates to the whole council area or just a part of it.

If you agree with our recommendations, please let us know. If you don't think our recommendations are right for East Riding we want to hear alternative proposals for a different pattern of wards.

We aim to propose a pattern of wards for East Riding of Yorkshire Council which delivers:

- **Electoral equality:** each councillor represents a similar number of electors.
- **Community identity:** reflects the identity and interests of local communities.
- **Effective and convenient local government:** helping your council discharge its responsibilities effectively.

### A good pattern of wards should:

- Provide good electoral equality, with each councillor representing, as closely as possible, the same number of electors.
- Reflect community interests and identities and include evidence of community links.
- Be based on strong, easily identifiable boundaries.
- Help the council deliver effective and convenient local government.

### Electoral equality

- Does your proposal mean that councillors would represent roughly the same number of electors as elsewhere in the council area?

### Community identity

- **Transport links:** are there good links across your proposed ward? Is there any form of public transport?
- **Community groups:** is there a parish council, residents association or another group that represents the area?
- **Facilities:** does your pattern of wards reflect where local people go for shops, medical services, leisure facilities etc?

#### Write to:

Review Officer (East Riding of Yorkshire)  
LGBCE, 7th Floor, Bunhill Row,  
London, EC1Y 8YZ

- **Interests:** what issues bind the community together or separate it from other parts of your area?
- **Identifiable boundaries:** are there natural or constructed features which make strong boundaries for your proposals?

### Effective local government

- Are any of the proposed wards too large or small to be represented effectively?
- Are the proposed names of the wards appropriate?

### Useful tips

- You can explore the maps on our website at [lgbce.org.uk](https://www.lgbce.org.uk)
- We publish all submissions we receive on our website.

#### Our website:

<https://www.lgbce.org.uk/all-reviews/east-riding-yorkshire>

#### Email:

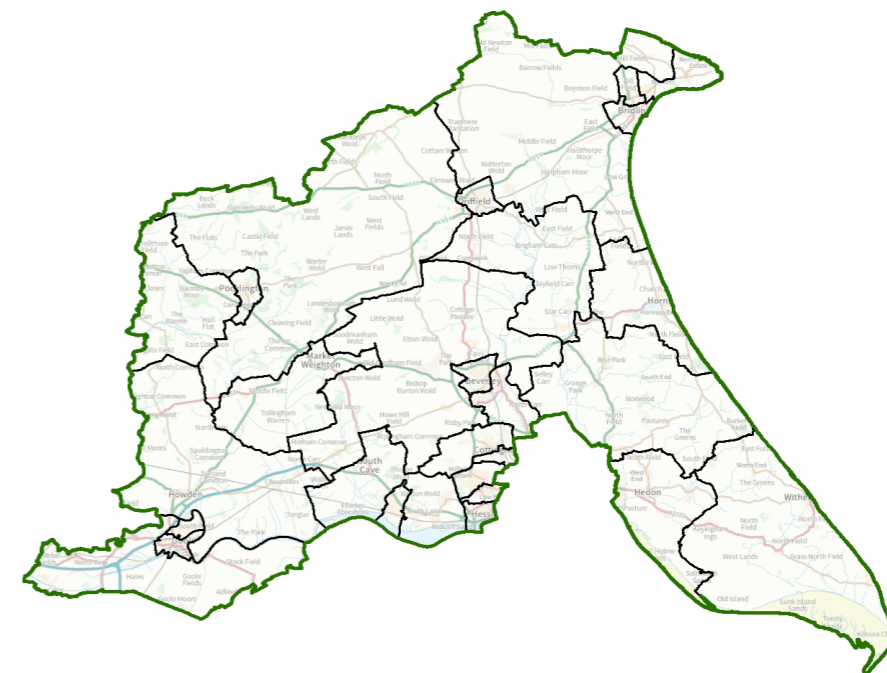
[reviews@lgbce.org.uk](mailto:reviews@lgbce.org.uk)

#### X:

@LGBCE

# East Riding of Yorkshire Council

## Draft Recommendations on the new electoral arrangements



### Who we are

- The Local Government Boundary Commission for England is an independent body set up by Parliament.
- We are not part of government or any political party.
- We are accountable to Parliament through a committee of MPs chaired by the Speaker of the House of Commons.
- Our main role is to carry out electoral reviews of local authorities throughout England.

### Electoral review

An electoral review examines and proposes new electoral arrangements for a local authority, including:

- The total number of councillors representing the council's electors ('council size').
- The names, number and boundaries of wards or electoral divisions.
- The number of councillors for each ward or division.

### Why East Riding?

- The Commission has a legal duty to carry out an electoral review of each council in England 'from time to time'.
- East Riding of Yorkshire Council has not been reviewed since 2001 and the Commission has therefore decided that it should review East Riding in advance of the elections in 2027.

### Our proposals

- We propose that the council should have **67 councillors** in future, representing 11 three-councillor wards and 17 two-councillor wards across the council area.

**You have until 12 May 2025 to have your say on the recommendations**

## Summary of our recommendations

Our draft recommendations propose that East Riding of Yorkshire Council should have 67 councillors, the same as the existing arrangements.

Those councillors should represent 11 three-councillor wards and 17 two-councillor wards across the council area.

Before drawing up the draft recommendations, the Commission carried out a public consultation inviting proposals for a new pattern of wards for East Riding.

We have considered all of the submissions we received during that phase of consultation. The boundaries of most wards should change.

An outline of the proposals is shown in the map to the right.

We welcome comments on our draft recommendations, whether you support the proposals or wish to put forward alternative arrangements.

### Have your say at

<https://www.lgbce.org.uk/all-reviews/east-riding-yorkshire>

- view the map of our recommendations down to street level.
- zoom into the areas that interest you most.
- find more guidance on how to have your say.
- read the full report of our recommendations.
- send us your views directly.

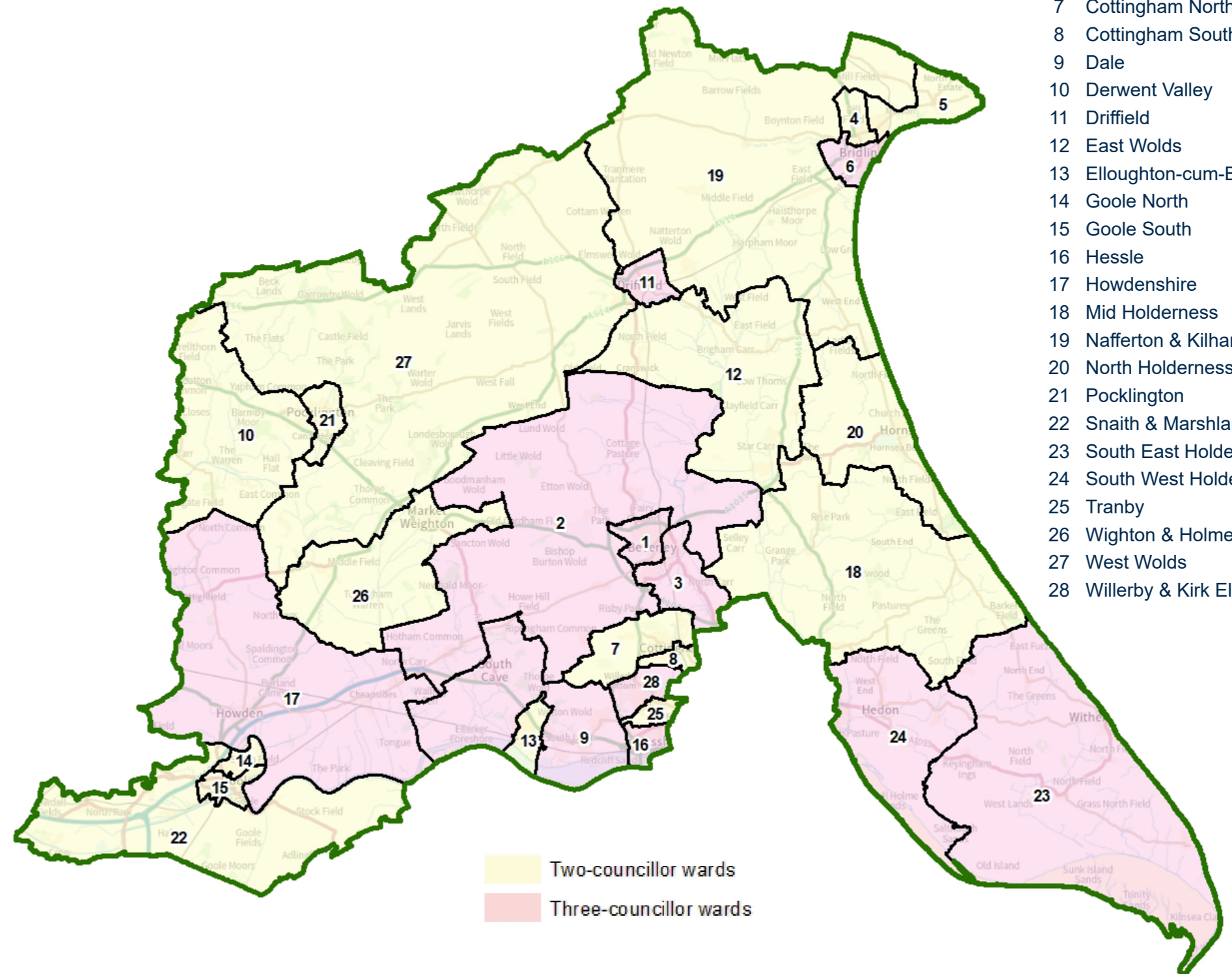
Stage of Review	Description
7 May - 9 September 2024	Public consultation on warding arrangements
4 March - 12 May 2025	Public consultation on draft recommendations
2 September 2025	Publication of final recommendations
May 2027	Subject to parliamentary approval - implementation of new arrangements at local elections

# Overview of draft recommendations for East Riding of Yorkshire Council

View this map online:

<https://www.lgbce.org.uk/all-reviews/east-riding-yorkshire>

Follow the review on X: [@LGBCE](https://twitter.com/LGBCE)



- 1 Beverley North
- 2 Beverley Rural
- 3 Beverley South & Woodmansey
- 4 Bridlington Central & Old Town
- 5 Bridlington North & Flamborough
- 6 Bridlington South
- 7 Cottingham North & Skidby
- 8 Cottingham South
- 9 Dale
- 10 Derwent Valley
- 11 Driffild
- 12 East Wolds
- 13 Elloughton-cum-Brough
- 14 Goole North
- 15 Goole South
- 16 Hessele
- 17 Howdenshire
- 18 Mid Holderness
- 19 Nafferton & Kilham
- 20 North Holderness
- 21 Pocklington
- 22 Snaith & Marshland
- 23 South East Holderness
- 24 South West Holderness
- 25 Tranby
- 26 Wighton & Holme
- 27 West Wolds
- 28 Willerby & Kirk Ella