

LOCAL GOVERNMENT AND PUBLIC INVOLVEMENT IN HEALTH ACT 2007

The West Northamptonshire Council (Reorganisation of Community Governance) Order 2025

Made 21st January 2025

Coming into force in accordance with article 1(2)

West Northamptonshire Council ("the Council"), in accordance with section 82 of the Local Government and Public Involvement in Health Act 2007⁽¹⁾ ("the 2007 Act"), has undertaken a community governance review and made recommendations.

The Council has decided to give effect to those recommendations and in accordance with section 93 of the 2007 Act, has consulted with the local government electors and other interested persons and has had regard to the need to secure that community governance reflects the identities and interests of the community and is effective and convenient.

In giving effect to the recommendations arising from the community governance review, the Council has obtained the consent of the Local Boundary Commission for England in respect of the changes made by articles 4, 5(1), 21, 23 and 24 of this Order to the parish electoral arrangements for the parishes of Boughton, Daventry, Hackleton, and Kingsthorpe which were made by the West Northamptonshire (Electoral Changes) Order 2024⁽²⁾.

The Council, in accordance with section 100 of the 2007 Act, has had regard to guidance issued under that section.

The Council makes the following Order in exercise of the powers conferred by sections 86, 98(3), 98(4) and 240(10) of the 2007 Act.

1 Citation and commencement

- (1) This Order may be cited as the West Northamptonshire Council (Reorganisation of Community Governance) Order 2025.
- (2) Subject to paragraphs (3) and (4) below, this Order comes into force on 1 April 2025.
- (3) Articles 5(1), 5(2), 23(1), 23(2) and 24 to 28 come into force on the ordinary day of election of councillors in 2025.
- (4) For the purposes of:
 - (a) this article, and
 - (b) proceedings preliminary or relating to the election of parish councillors for the parish councils affected by the changes made by this Order, to be held on the ordinary day of election of councillors in 2025,

this Order comes into force on the day after that on which it is made.

2 Interpretation

(1) 2007 c.28.
(2) S.I. 2024/65.

In this Order—

"existing" means existing on the date this Order is made;

"map" means the map marked "Map referred to in the West Northamptonshire Council (Reorganisation of Community Governance) Order 2025" and deposited in accordance with section 96(4) of the 2007 Act and any reference to a numbered sheet is a reference to the sheet of the map which bears that number.

"ordinary day of election" has the meaning given by section 37 of the Representation of the People Act 1983⁽³⁾; and

"registration officer" means an officer appointed for the purpose of, and in accordance with, section 8 of the Representation of the People Act 1983.

3 Effect of Order

This Order has effect subject to any agreement under section 99 of the 2007 Act relevant to any provision of this Order.

4 Alteration of the parish areas of Boughton and Kingsthorpe

The area designated by the grey shading on the map (sheet number 1) ceases to be part of the parish of Boughton and becomes part of the Obelisk East ward of the parish of Kingsthorpe to result in an amended boundary for the parish of Boughton as shown edged red on the map (sheet number 1) and an amended boundary for the parish of Kingsthorpe as shown edged red on the map (sheet number 1).

5 Electoral arrangements for the parish of Boughton

- (1) The Boughton Village & Buckton Fields ward and the Dixon Road ward of the parish of Boughton are abolished.
- (2) The parish of Boughton is not divided into wards.
- (3) The number of parish councillors for the parish of Boughton is unchanged.

6 Electoral arrangements for the parish of Kingsthorpe

The number of parish councillors for the parish of Kingsthorpe is unchanged.

7 Alteration of the parish areas of Weedon Bec and Dodford⁽⁴⁾

The parish boundary between the parish of Weedon Bec and the parish of Dodford is amended so that the area designated by grey shading on the map (sheet number 2) ceases to be part of the parish of Dodford and becomes part of the parish of Weedon Bec to result in an amended boundary for the parish of Dodford as shown edged red on the map (sheet number 2) and an amended boundary for the parish of Weedon Bec as shown edged red on the map (sheet number 2).

8 Electoral arrangements for the parish of Weedon Bec

The number of parish councillors for the parish of Weedon Bec is unchanged.

(3) 1983 c.2.

(4) The parish of Dodford remains without a parish council.

9 Alteration of the parish areas of Great Houghton and Little Houghton

The parish boundary between the parish of Great Houghton and the parish of Little Houghton is amended so that the area designated by grey shading on the map (sheet number 3) ceases to be part of the parish of Little Houghton and becomes part of the parish of Great Houghton to result in an amended boundary for the parish of Little Houghton as shown edged red on the map (sheet number 3) and an amended boundary for the parish of Great Houghton as shown edged red on the map (sheet number 3).

10 Electoral arrangements for the parish of Great Houghton

The number of parish councillors for the parish of Great Houghton is unchanged.

11 Electoral arrangements for the parish of Little Houghton

The number of parish councillors for the parish of Little Houghton is unchanged.

12 Alteration of the parish areas of Moulton and Pitsford.

The parish boundary between the parish of Pitsford and the parish of Moulton is amended so that the area designated by grey shading on the map (sheet number 4) ceases to be part of the parish of Moulton and becomes part of the parish of Pitsford to result in an amended boundary for the parish of Moulton as shown edged red on the map (sheet number 4) and an amended boundary for the parish of Pitsford as shown edged red on the map (sheet number 4).

13 Electoral arrangements for the parish of Moulton

The number of parish councillors for the parish of Moulton is unchanged.

14 Electoral arrangements for the parish of Pitsford

The number of parish councillors for the parish of Pitsford is reduced from nine to seven.

15 Alteration of the parish areas of Roade and Stoke Bruerne

The parish boundary between the parish of Roade and the parish of Stoke Bruerne is amended so that the area designated by grey shading on the map (sheet number 5) ceases to be part of the parish of Stoke Bruerne and becomes part of the parish of Roade to result in an amended boundary for the parish of Stoke Bruerne as shown edged red on the map (sheet number 5) and an amended boundary for the parish of Roade as shown edged red on the map (sheet number 5).

16 Electoral arrangements for the parish of Roade

The number of parish councillors for the parish of Roade is unchanged.

17 Electoral arrangements for the parish of Stoke Bruerne

The number of parish councillors for the parish of Stoke Bruerne is unchanged.

18 Alteration of the parish areas of Towcester and Tiffield

The parish boundary between the parish of Towcester and the parish of Tiffield is amended so that the area designated by grey shading on the map (sheet number 6) ceases to be part of the Mill ward of the parish of Towcester and becomes part of the parish of Tiffield to result in an amended boundary for the parish of Towcester as shown edged red on the map (sheet number 6) and an amended boundary for the parish of Tiffield as shown edged red on the

map (sheet number 6).

19 Electoral arrangements for the parish of Towcester

The number of town councillors for the parish of Towcester is unchanged.

20 Electoral arrangements for the parish of Tiffield

The number of parish councillors for the parish of Tiffield is unchanged.

21 Alteration of the parish areas of Wootton and Hackleton

The area designated by the grey shading on the map (sheet number 7) ceases to be part of the parish of Hackleton and becomes part of the parish of Wootton to result in an amended boundary for the parish of Hackleton as shown edged red on the map (sheet number 7) and an amended boundary for the parish of Wootton as shown edged red on the map (sheet number 7).

22 Electoral arrangements for the parish of Wootton

The number of parish councillors for the parish of Wootton is unchanged.

23 Electoral arrangements for the parish of Hackleton

- (1) The Hackleton & Piddington ward and Hackleton Urban ward of the parish of Hackleton are abolished.
- (2) The Parish of Hackleton is not divided into wards.
- (3) The number of parish councillors for the parish of Hackleton is unchanged.

24 Change to electoral arrangements – wards of the parish of Daventry

- (1) The existing ward of Daventry South in the parish of Daventry is abolished and that part of the parish of Daventry is divided into two wards named Daventry South East and Daventry South West.
- (2) The Daventry South East ward and the Daventry South West ward of the parish of Daventry each comprises the area designated on the map (sheet number 8) by reference to the name of the ward and demarcated by red lines.
- (3) The number of Councillors for Daventry South East ward is five.
- (4) The number of Councillors for Daventry South West ward is five.

25 Change to electoral arrangements – number of Parish Councillors for the parish of Overstone

The number of parish councillors for the parish of Overstone is increased from nine to twelve.

26 Change to electoral arrangements – number of Parish Councillors for the parish of Ravensthorpe

- (1) The number of parish councillors for the parish of Ravensthorpe is reduced from nine to eight.
- (2) The number of parish councillors for the Ravensthorpe ward of the parish of Ravensthorpe is seven and the number of councillors for the Coton ward of the parish of Ravensthorpe is one.

27 Change to electoral arrangements – number of Parish Councillors for the parish of Thorpe Mandeville

The number of parish councillors for the parish of Thorpe Mandeville is increased from five to six.

28 Change to electoral arrangements – number of Parish Councillors for the parish of West Hunsbury

The number of parish councillors for the parish of West Hunsbury is increased from eight to nine.

29 Electoral register

The registration officer for West Northamptonshire Council shall make such rearrangement of, or adaptation of, the register of local government electors as may be necessary for the purposes of, and in consequence of, this Order.

30 Order date

1 April 2025 is the Order date for the purposes of the Local Government (Parishes and Parish Councils) (England) Regulations 2008⁽⁵⁾.

Sealed with the seal of the Council on the 21st day of January 2025 A.1504/2025



Authorised Officer

A. Powers
A. Powers

⁽⁵⁾ S.I. 2008/625.

EXPLANATORY NOTE

(This note is not part of the Order)

This Order gives effect to recommendations made by West Northamptonshire Council for: the alteration of the areas of the parishes of Boughton, Kingsthorpe, Weedon Bec, Dodford, Great Houghton, Little Houghton, Moulton, Pitsford, Roade, Stoke Bruerne, Towcester, Tiffield, Wootton and Hackleton in the unitary area of West Northamptonshire; and the alteration of the electoral arrangements for the parishes of Boughton, Hackleton, Daventry, Overstone, Ravensthorpe, Thorpe Mandeville and West Hunsbury.

The alteration of the areas of the parishes takes effect on and from 1st April 2025.

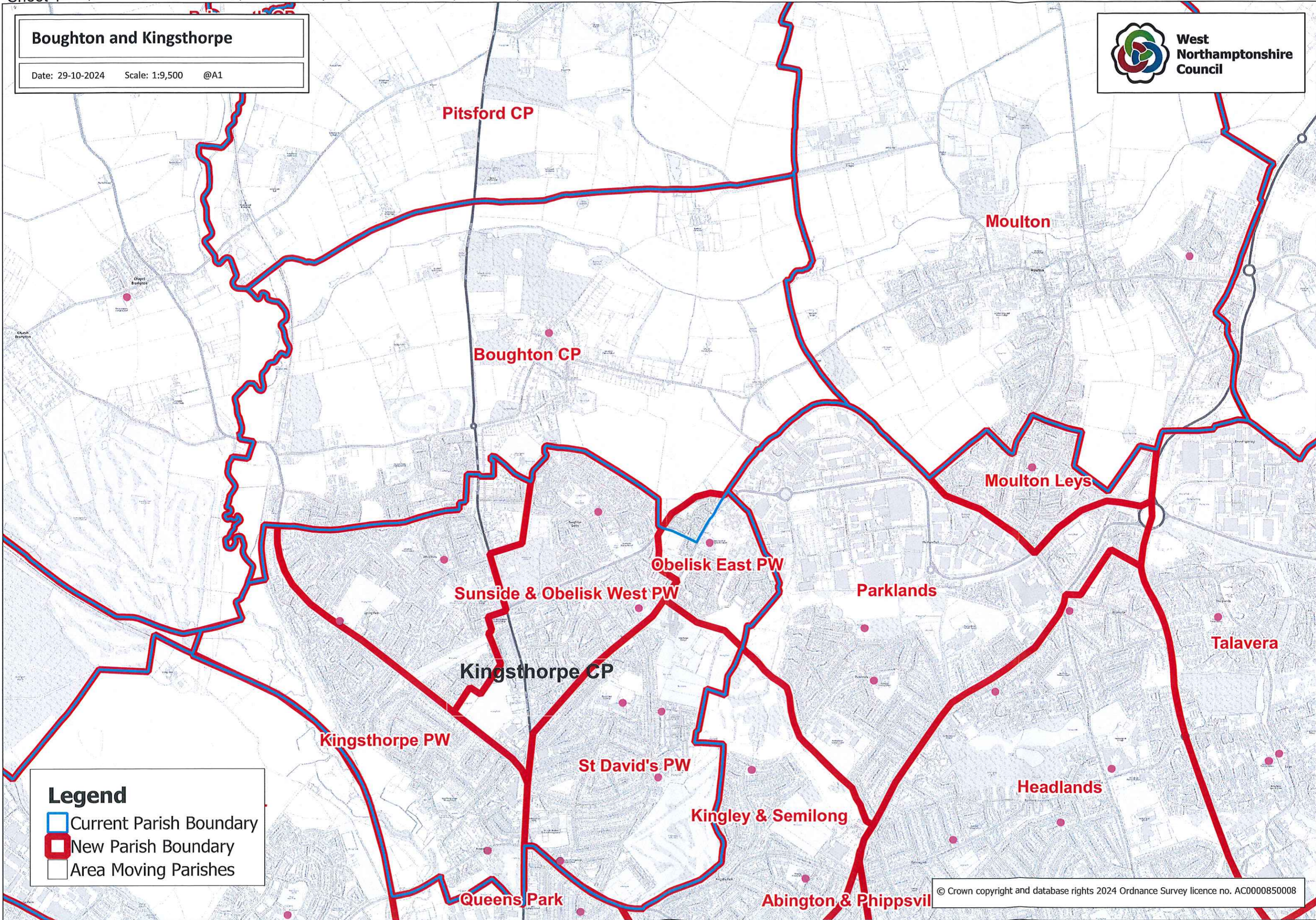
The map defined in Article 2 shows the new boundaries of the altered parishes. They are available, at all reasonable times, at the offices of West Northamptonshire Council.

Certain articles state the number of councillors for the parishes mentioned in those articles is unchanged. The number of councillors for each of those parishes is –

Name of parish	Number of councillors
Boughton	11
Kingsthorpe	15
Weedon Bec	13
Great Houghton	7
Little Houghton	9
Moulton	14
Roade	13
Stoke Bruerne	7
Towcester	16
Tiffield	9
Wootton	12
Hackleton	11



Boughton and Kingsthorpe
Date: 29-10-2024 Scale: 1:9,500 @A1



Legend

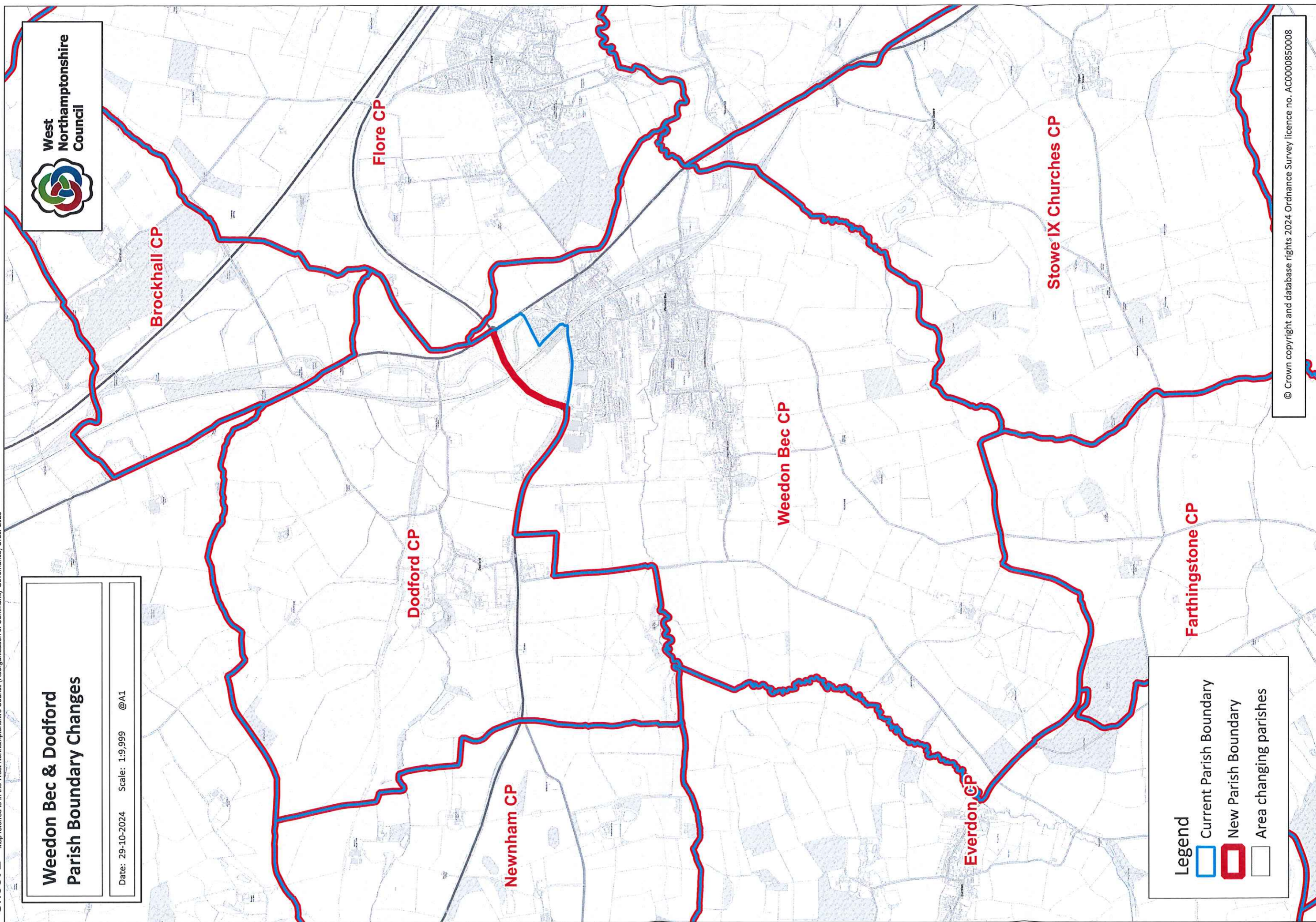
- Current Parish Boundary
- New Parish Boundary
- Area Moving Parishes

Weedon Bec & Dodford Parish Boundary Changes




Date: 29-10-2024 Scale: 1:9,999 @A1



West Northamptonshire Council

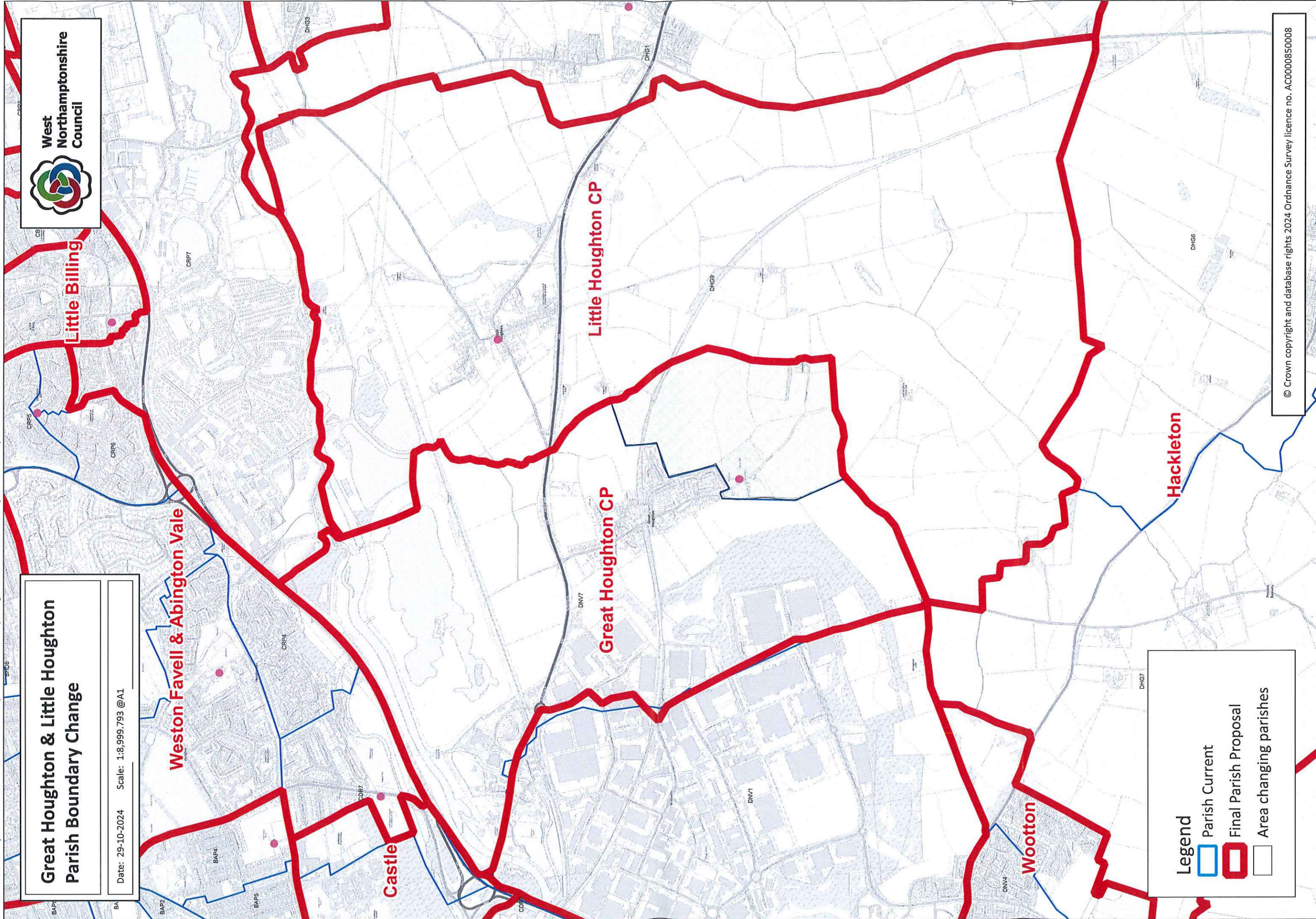


Legend

-  Current Parish Boundary
-  New Parish Boundary
-  Area changing parishes

Great Houghton & Little Houghton Parish Boundary Change

Date: 29-10-2024 Scale: 1:8,999.793 @A1

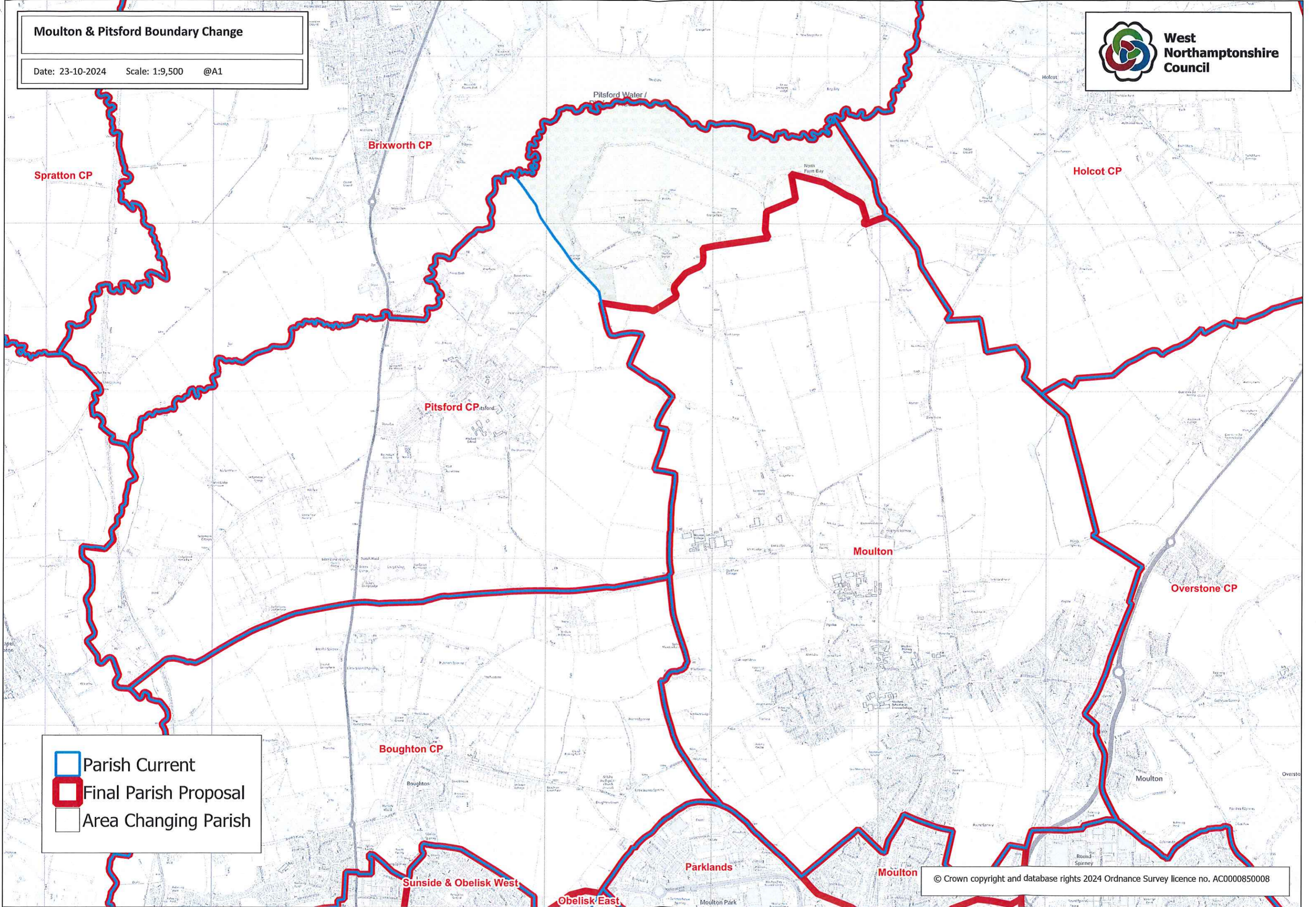


Legend

- Parish Current (Blue outline)
- Final Parish Proposal (Red outline)
- Area changing parishes (White box)



Moulton & Pitsford Boundary Change
Date: 23-10-2024 Scale: 1:9,500 @A1



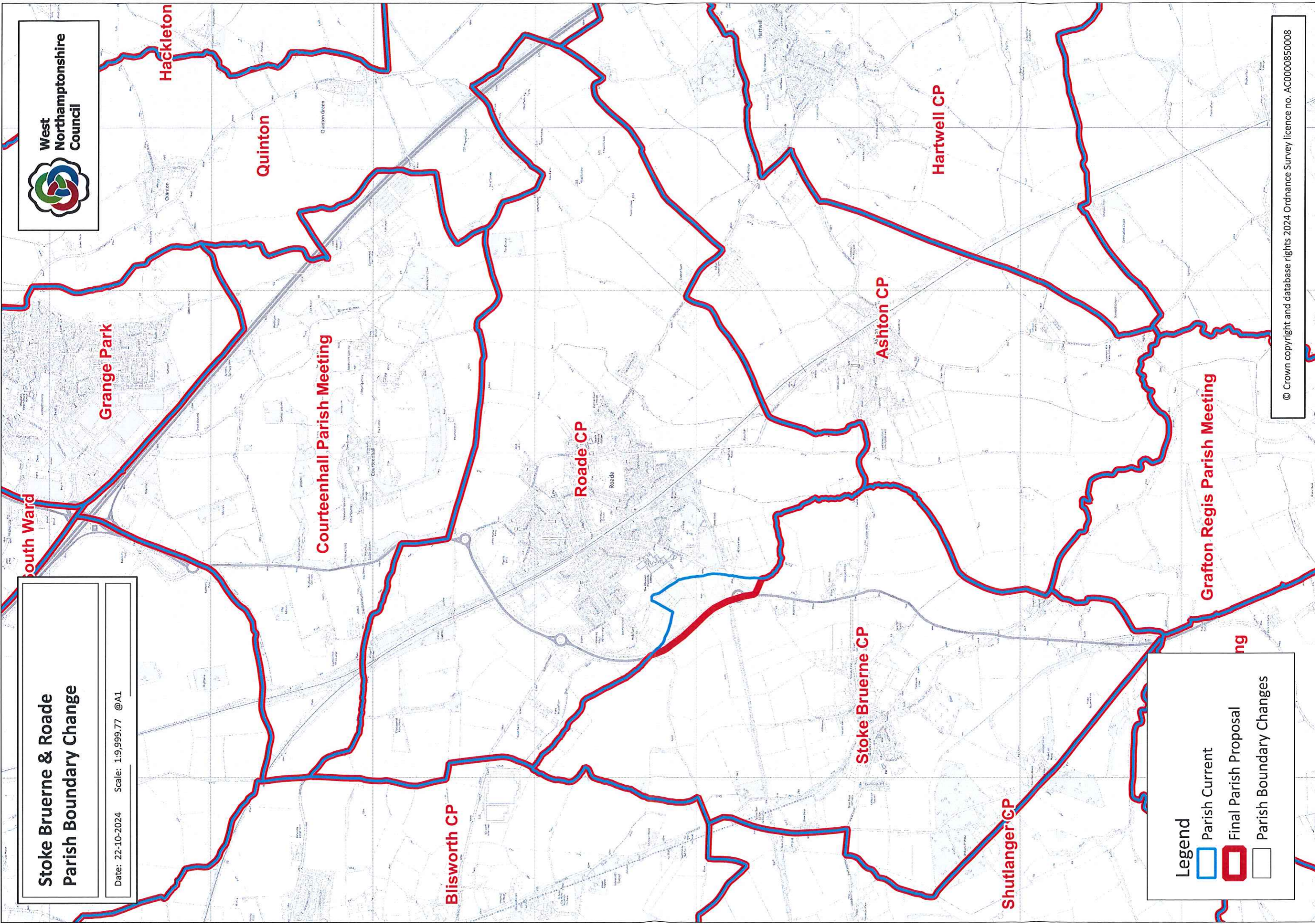
Parish Current
Final Parish Proposal
Area Changing Parish

Stoke Bruerne & Roade Parish Boundary Change




Date: 22-10-2024 Scale: 1:9,999.77 @A1



West Northamptonshire Council

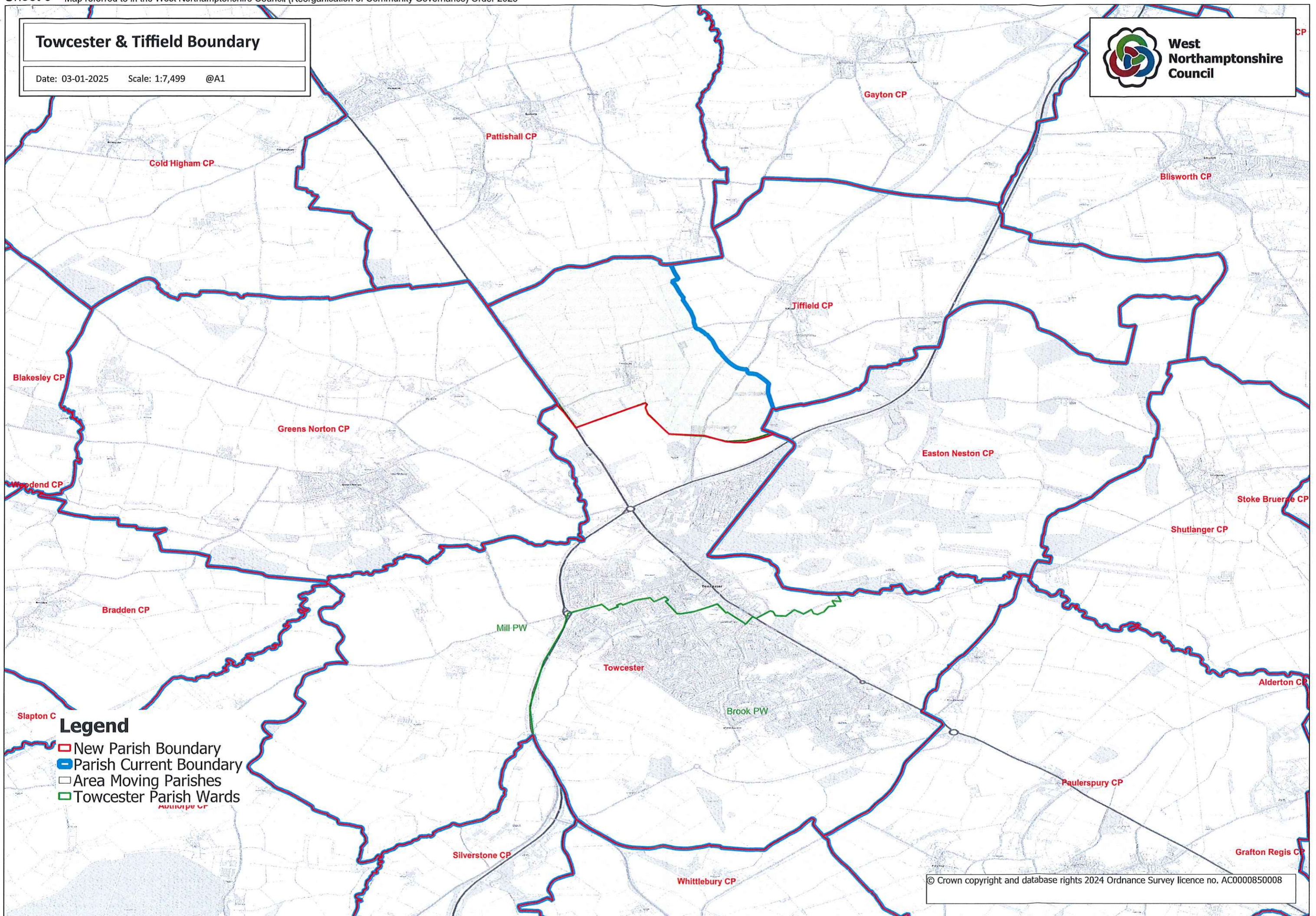


Legend

-  Parish Current
-  Final Parish Proposal
-  Parish Boundary Changes



Towcester & Tiffield Boundary
Date: 03-01-2025 Scale: 1:7,499 @A1



- Legend**
- ▭ New Parish Boundary
 - ▭ Parish Current Boundary
 - Area Moving Parishes
 - ▭ Towcester Parish Wards

Wootton & Hackleton Parish Boundary Change

Date: 22-10-2024 Scale: 1:9,999.77 @A1



West
Northamptonshire
Council

Hardingstone

Great Houghton

Little Houghton

Wootton

Grange Park

Hackleton



Quinton

Courteenhall Parish Meeting

Ashton CP

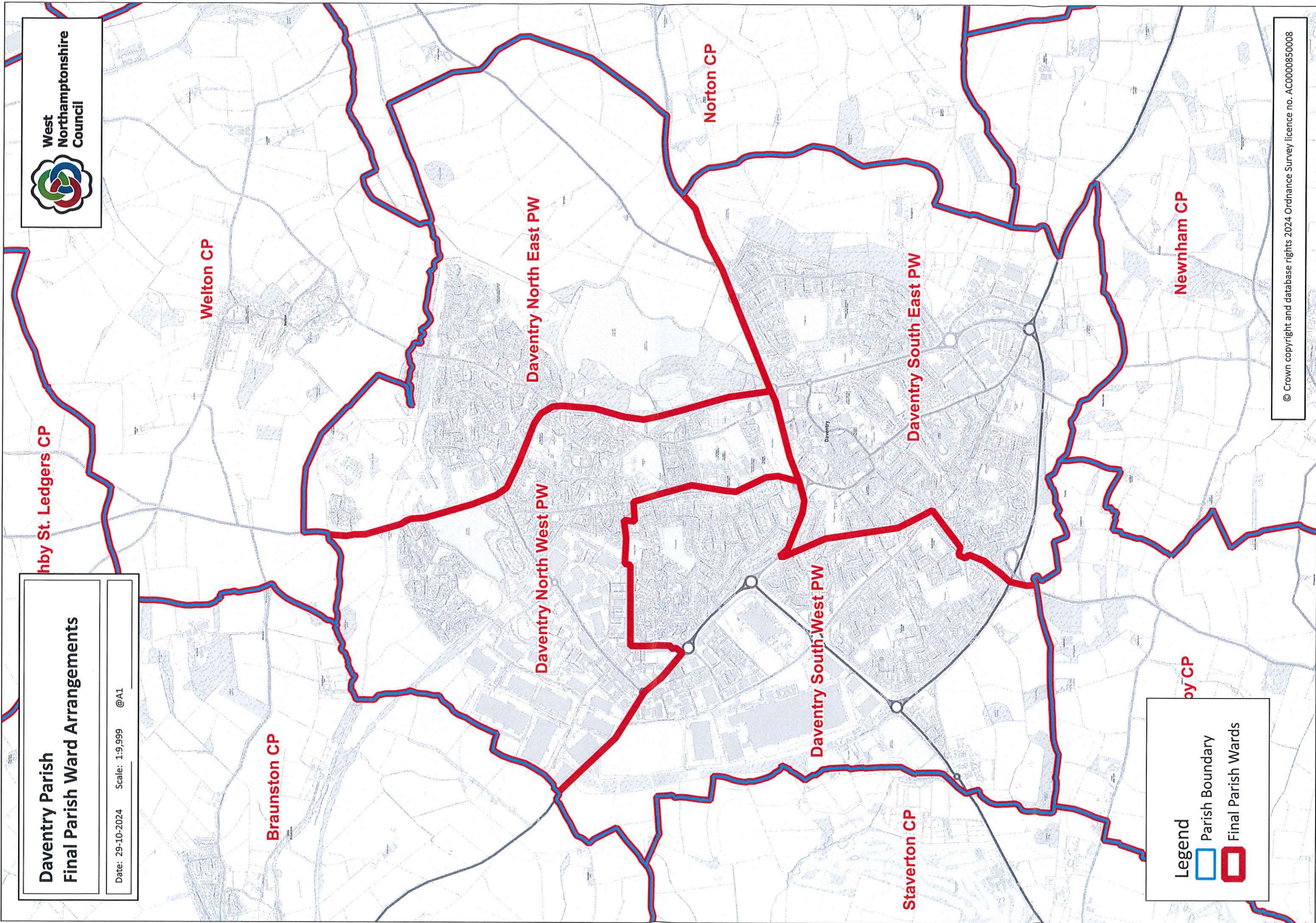
Hartwell CP

Legend

-  Parish Current
-  Final Parish Proposal
-  Parish Boundary Changes

Daventry Parish Final Parish Ward Arrangements

Date: 29-10-2024 Scale: 1:9,999 @A1



Legend

- Parish Boundary
- Final Parish Wards