

ESSEX

July 2024

NEW ELECTORAL ARRANGEMENTS

Currently there are:

- 75 councillors
- 75 divisions
- 65 single-member and 5 two-member divisions

171 residents and organisations
helped shape our recommendations



We aim to make sure Essex
councillors represent a similar
number of electors

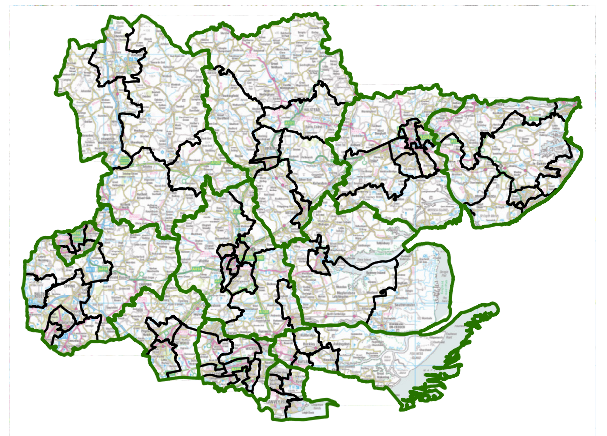


Currently there are:

- 30 divisions that are more than 10% away from the average number of electors per division
- 3 divisions that are more than 30% away from the average

From elections in 2025:

- 78 councillors
- 78 divisions
- 1 councillor per division



Essex will move towards:

- 7 divisions being more than 10% away from the average number of electors per division
- Each councillor representing an average of 15,848 electors